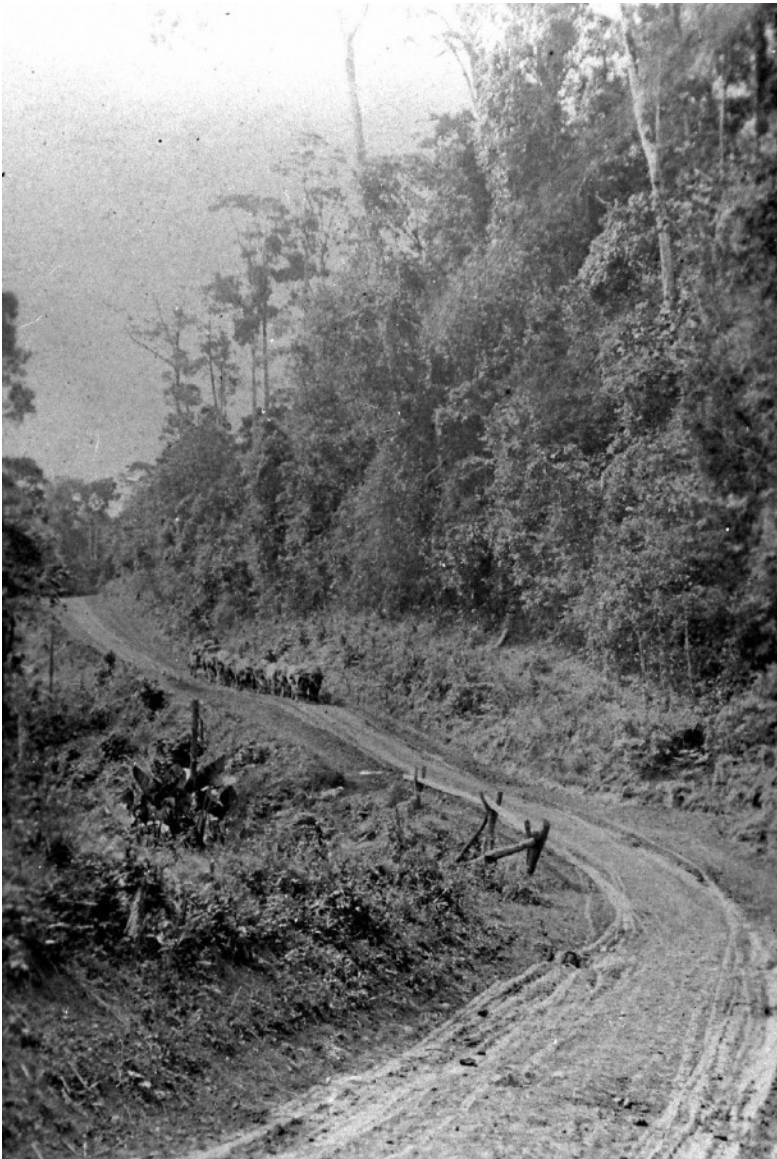


Selector's Conditions

- * All the selections were settled at 2 shillings and 6 pence an acre (25c).
- * Annual rent payable on or before end March
- * Late payment fee was accepted , one tenth of the amount payable added to the fee.
- * Selector must reside on his land continuously for 5 years. On failure to reside during a period of 6 months, the selection may be forfeited , all improvements will revert to Her Majesty.



2 / 11

A bullock team on the Blackall Range, Maleny showing the heavily timbered country side, ca 1908.
Photo: Picture Sunshine Coast.

- * During the 5 year term, a sum at the rate of ten shillings (\$1.00) per acre must be spent on improvements.
- * Within 6 months at the end of his 5 year term, the selector had to prove in an open court that he'd fulfilled all conditions and a certificate of fulfilment was issued and the selector was issued with a **Deed of Grant** on payment of the Deed Fee.
- * A road 2 chains wide may be proclaimed open through the land at any time within 10 years from the application to select.