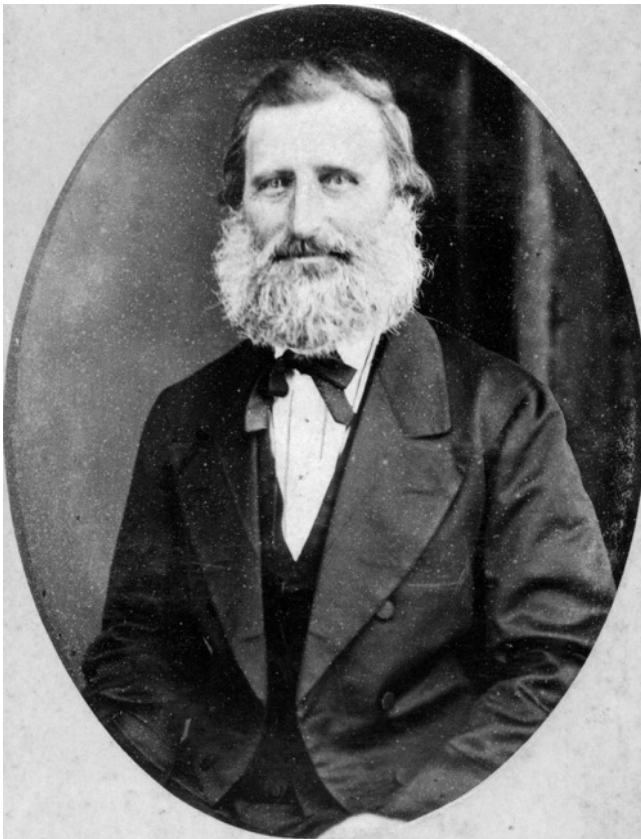


William Pettigrew

William Pettigrew (1825-1906) held a land selection in the early days of European settlement in the Maleny district. He also had timber enterprises as far north as Maryborough. Born in Scotland, Pettigrew arrived in Moreton Bay in 1849 and opened Brisbane's first steam sawmill in 1853. He was a member of the Caboolture Divisional Board, an alderman on the Brisbane Council, and was appointed a life member of the Qld Legislative Council. A man with a social conscience, he advocated for railways, sanitation, and forest conservation. Pettigrew was a prolific diarist and his entries in 1883 mention some of Maleny's earliest selectors.



Diary, 1883

January. Graves – Blackall range Melum ck let know week before when go & he will bring horse, has 1885 acres 900,000 ft cedar £900 @ 2/- 800,000 beech at 1/- = £400 total £1300. Wants to sell and go home. Parties on Blackall see opposite.

Blackall Range

J. Simpson, Hayes, Burgis. Road to left or W [West]. Walker, McCarthy, Graves, Brown, Grigor. P. O'Sullivan. At Burgis go north to John Campbell, W. Simpson. Between N.&W. [North & West] Roads are Joseph Isles, F. Dunlop, Pitt.

Blackall Range

March. Graves has 1885 acres, 900,000 ft cedar 2/- 800,000 ft beech at 1/- = £1300. Walker 600 ac [acres], McCarthy 640, Brown 320, Grigor 320 all with cedar and beech.

Mrs Jane Dunlop and her 5 children came to the Blackall Range at the request of Mr Pettigrew following the death of her husband, Francis Dunlop Snr in 1865. She was Pettigrew's occupier and caretaker of his land at Bald Knob.

Jan & Feb	1st & 2d Months	1883	1883	31 & 28 Days	Jan & Feb
	Blackall range				
29 Mon	J. Simpson, Hayes, Burgis Road to left or W. Walker, McCarthy Graves, Brown, Grigor, P. O'Sullivan				Had visit of Charles Chapman - Captain writing a book.
30 Tu	At Burgis go north to John Campbell, W Simpson.				
	Between N. & W. roads are Joseph				
31 Wed	Lakes, F. Dunlop, Pitt.				Graves - Blackall range Malou. He let know week before when go if he will bring horse. has 1885 acres 900,000 ft cedar $\frac{2}{4}$ - 900,000 beech at 1/- = £400 total £1300. wants to sell 4 of horse
1 Feb	Th				Parties on Blackall see opposite
2	Fri				
3	Sat				

Feb & March	2d & 3d Months	1883	1883	28 & 31 Days	Feb & March
	Down Hall Sandgate				
26 Mon	13-12 suits 26-9				
	79 chairs				
27 Tu	1/2				Asked McKay for 20 bags maize - only 6 bags left. Sent it 1 or 2 ^d March. 3/2
28	Wed				
1	March	Th			Blackall range Graves has 1885 acres. 900,000 ft cedar $\frac{2}{4}$ - 800,000 ft beech 1/- = £1300. Walker 600 ac. McCarthy 640. Brown 320, Grigor 320 all with cedar and beech. So Jan 31 beech
	All Tenants case 8/-				
	Stout 10/-				
2	Fri	Whisky 24/- bond Hennessy 3 at 50/-			
3	Sat				

