

SPECIAL 8-PAGE COMMEMORATIVE EDITION

MALENY SHOW SOCIETY

100



YEARS

1922-2022



Brisbane Courier
THURSDAY, 16 JUN, 1927

MALENY SHOW
NAMBOUR, JUNE 13

The Maleny Show Society is apparently well on towards its aim of making its annual show the premier country dairy cattle contest of Queensland. The society has only been in existence for about four years, yet for the show to be held on July 23 and 24, there are 310 entries in the cattle classes, of which 130 are from Illawarra, and 75 from Jersey breeders. Other breeds are also represented. This high standard of exhibition in regard to cattle is evidently regarded as attractive to large gatherings and is reflected in the remaining sections.

LETTER FROM THE PRESIDENT

AGRICULTURAL Shows have been a vitally important part of many Australian communities for more than 100 years. In England they are called County Fairs. Although quite different to our Agricultural Shows, they provide similar opportunities for farmers, exhibitors, and the public.

Maleny Agricultural Industrial Pastoral and Recreational Society was formed in 1922 and the first show was in 1923. That show was very different to our event that today everyone calls 'The Maleny Show'. The showground was small, and events were mainly focused on horse events, dairy cattle, home grown agricultural produce, home cooking, preserves etc. Entertainment was also different - there was no outside entertainment provided, it was all locally sourced. Horse and buggy proficiency, woodchopping displays, yarn and storytelling, whip cracking, food and beverage including alcohol, and a dance with music provided by local musicians. Life around Maleny was a solitary existence, with limited opportunity to socialise other than with neighbours and fellow church parishioners. Consequently, the annual show was an important and exciting event. For men it was an opportunity to demonstrate their skills and the quality of their animals, for women it was a rare opportunity to wear homemade finery and show off their cooking skills, for children it was an exciting opportunity to meet children they would not meet at church or at their small district school.

Today's Maleny Show has become one of the largest and most successful country agricultural shows in Queensland. The standard of exhibits, animals, entertainment, and community involvement is exceptional. This reflects the importance of our show for members, exhibitors, trade displays, local community organisations and the broader community.

Buildings and facilities have evolved significantly. The showground is now home to around 16 community sport and recreation groups and accommodates a much-visited camping facility. The showgrounds today are almost two and a half times the size of that established in 1922. Significantly, many of our facilities have been constructed by volunteer members and friends of the society.

To all current and past show members, you can be justifiably proud of a century of dedication, planning, and hard work.

Maleny Show Society President, Winston Johnston

TOP LEFT TO RIGHT: Jim Grigor Charles Porter Jack Fritz seated L to R | 1923 Big Picture | April 1923 First Show | Alex and Mildred Hunt in middle of front row & Mr Burnett in the back left.

A CENTURY OF DEDICATION

The formation of the Maleny Show Society in 1922 was a watershed moment for the community, but early news articles show it wasn't all smooth sailing

1922 MALENY SHOW SOCIETY FORMED

A public meeting was held in the Maleny School of Arts on the 27th instant to form a Show and Recreational Society. Mr A.M. Hunt, Chairman of the Provisional Committee, gave a resume of what had transpired up to the present, and as the Show and Recreation ground was now secured and vested in the shire council the work of the provisional was now ended. Mr Tytherleigh Chairman of the Landsborough Shire, was voted to the chair for this meeting. He considered the people of Maleny and district were fortunate in securing such a suitable piece of land for show and recreation purposes. A hearty vote of thanks was then accorded to all those who had assisted in any way in helping to secure

the site, those specially mentioned being Messrs, Thytherleigh, Fleming, R. Bryce., C. Leeding, J. Nicol Robinson and J. Grigor.

Nambour Chronicle & North Coast Advertiser

MALENY SHOW AND RECREATION GROUND

Notification is contained in the government gazette of the 6th of October of a proclamation that the land described below is taken by the council of the shire of Landsborough for recreation and showground purposes.

1923 FIRST SHOW

It was pitiable to see the conditions, mud and slush everywhere, the attend-

ants, the cattle owners, the workers, all out in the weather determined, though the cattle exhibits were much more numerous than spectators, to carry on and see it thought. It seems really hard that on the occasion of the first show with which it was intended to make the best display possible and which promised so well, has been so marred.

Nambour Chronicle

1926 MALENY SHOW

General Review
Wonderful! It seemed that this excessive adjective was upon everybody's lips during the two Maleny show days, and whether the fourth annual show is inspected from the viewpoint of the stockman, the lover of pavilion exhibits

or the horse fancier, 'wonderful!' seems to be the word to most adequately describe the source of success.

Nambour Chronicle

1933 SHOW ABANDONED MALENY SOCIETY'S DECISION

Following a free discussion by the committee of the Maleny A.I.P. and R. Society at a meeting on February 14, a proposal to abandon the holding of the Annual Show for 1933 was agreed unanimously. Mr A.J. Bryce (president) occupied the chair and invited free discussion on the subject. Mr R.J. Lindsay strong advised the abandoning of the 1933 show. He gave as his reasons the present low price of butter and other commodities of the district with no immediate

recovery in view. The surrounding districts were also suffering heavily from the depression, so little or no support could be expected from them.

The spending power of the public was greatly reduced, and there were other public institutions, such as the Hospital and Ambulance that required all the assistance the people could afford.

Nambour Chronicle and North Coast Advertiser

1936 105 pound Profit from Maleny Show Society's Annual Meeting New President Mr W. Collard

Mr A.J. Bryce presided at the annual meeting of the Maleny Show Society held on Saturday last and at which there was a large and representative attendance. The financial statement presented

showed a net profit from the Show activities of 105 pounds.

The Nambour Chronicle

1937 RENOWNED DAIRYING CENTRE'S ANNUAL SHOW

Work of an important nature is proceeding at present by the committee of the Maleny Show Society to ensure that the Society's annual exhibition in 1937 fully attains the distinction which the district has already earned as a particularly successful dairying centre.

The Nambour Chronicle

1937 12th Annual Report of the Maleny Show Society: "In the year under review one is struck with the success achieved against such adverse circumstances."

1938 FURTHER MONIES AT FIXED DEPOSIT MALENY SHOW SOCIETY'S ANNUAL MEETING

Mr W.A. Collard re-elected President "The entries in this year's show were well maintained and while the entries were not up to those of last year, the quality was very good."

"The pig section was well represented. In the building the household needlework and fine arts sections were well up to the standard. Unfortunately the flower section was not up to the standard owing to the adverse weather conditions."

The Nambour Chronicle

1940-1948

No shows are held due to war.

1949 MALENY REVIVES ANNUAL SHOW Dairy Cattle Main Attraction

Maleny Show, which was revived against last week after being in recess since 1939, was a triumph for an enthusiastic committee and community over difficulties.

It is not easy to organise a show with continuity lacking as background but the public were well satisfied and the treasurer not disappointed.

Queensland Country Life



MAIN IMAGE: The first Maleny show, April 1923. BOTTOM LEFT TO RIGHT: Jim Gardner, Jack Larney | Grand Parade with cars on the hill c1930 | Bev Reyne (nee Rapp) on Sir Bob 1951 | Fred Hodgens | Old Pavilion c1930's | A family enjoys the 1954 show | Ben Rickaby, 1923 | Laura and Evan Evans.



PEOPLE POWER

The enduring success of the Maleny Show Society has been thanks to the thousands of volunteers who have given their time and energy to help showcase and celebrate our unique region.

MALENY SHOW INVOLVEMENT SPANNING GENERATIONS

By Sonia Isaacs Clark

AUSTRALIAN agricultural shows have been showcasing the achievements of farming communities across the country. An integral part of rural community life, over the years agricultural shows would often see a dedicated local commitment that would often span generations of families in involvement. GC&M News caught up with former Maleny Show Society Treasurer, Bob Hawkins, and his granddaughter Felicity Heading (nee Grigor) who is this year's Maleny Show personality program coordinator to find out a little more about what the Maleny Agricultural Show has meant to them and their family. Bob (pictured with Felicity), who has spent all his life in Maleny, reckons he has been involved with the Maleny Show Society for around 40 years, volunteering 16 years as treasurer. An honorary life member, Bob remembers that back when he was young, volunteering was just a normal part of community life.

"I first got involved because that's just what country people did back then. We didn't have the same population we have now, and everybody in the community just rolled up their sleeves and got involved," explained Bob.

Bob has many fond memories reminiscing about his time with the Show Society, and said he felt the annual event really helped put Maleny on the map. He said it was considered one of the best agricultural shows around, and he took a lot of pride being involved, making a lot of life-long, good friends along the way. He said it was great to see many younger people

still coming along to the shows, and hoped they enjoyed the connection to Maleny's agricultural traditions.

"I'd love to see more of the younger ones get involved now and help keep it going. We might not be around, but I'd love to see the Maleny Show continue for another 100 years!"

When asked what the Maleny Show means to her, Felicity said she felt the show was a wonderful way to showcase the rich and diverse agricultural produce of the region, and promote local producers at a grassroots level.

"I also feel a big focus now is the educational opportunities the Maleny Show offers terms of raising awareness of traditional practices, farming and agricultural techniques. We have so many people now moving to the area that have limited understanding about the processes involved with livestock and horticultural production, so this is a fantastic way for people to connect with local producers, get inspired and hopefully consider purchasing local," said Felicity.

Felicity has donned numerous Show Society caps over the years including Junior Vice President, Sponsorship Co-ordinator, and Rural Ambassador. She said the centenary milestone of the forming of the 'Show and Recreation Society Committee' in July 1922 was a significant and special achievement.

"Not every town has a show and to have such a successful long running show is a significant achievement we should all be proud of. I hope this wonderful tradition continues," said Felicity.



LIFELONG CONNECTION TO THE SHOW SOCIETY

By Kayrene Corkin

LIFE member of the Maleny Show Society, Margaret Wild, will turn 100 yrs in October 2022. Margaret and her family have been connected with the Maleny Show since 1949 when her husband Laurie (pictured below with John) competed with two horses "Darlene" and "Jewel". They were jumping horses but also were great sporting horses. Margaret volunteered countless hours helping out with cooking, catering and judging cakes, jams etc. She was still volunteering into her 90s and sponsors the Laurie Wild Memorial Junior Six Bar event along with family in honour of Laurie who passed away in 1995. He was a great support to young riders and volunteered on the grounds and in the horse ring up until his death.

It was only natural that the Wild children would also become part of the Maleny Show family following the examples of their parents. For some years a rodeo was run in conjunction with the Show and Laurie supplied many of the cattle. It took the family to do the mustering while Laurie was transporting cattle into the Showgrounds and then to have them returned home again after the event.

I have been ring steward for around 30 years, and it is a blessing to have the support of my husband Bob and sons Scott and Greg, their families, and the large extended Wild families.

Most years there are around 20 family members from four generations who are part of the Maleny Show. This generational volunteering in the horse ring can be seen in other families like the Hankinson and Ferriday, and also a lot of the ring stewards continue to volunteer year after year.

It is wonderful to see the younger generations being involved and out there enjoying themselves and giving to the community, even though they just see themselves as going to the Maleny Show.



LEFT TO RIGHT: The extended Hankinson family | Kayrene Corkin and family helpers in main ring | Laurie Wild and John.

HIGHLIGHTS

1922
The Maleny Show Society (initially called the Agricultural Industrial Pastoral and Recreational Society) is formed.
1923
The first Maleny show is held on June 26 and 27 and heralds the start of a long tradition of wet shows as it pours with rain over both days.

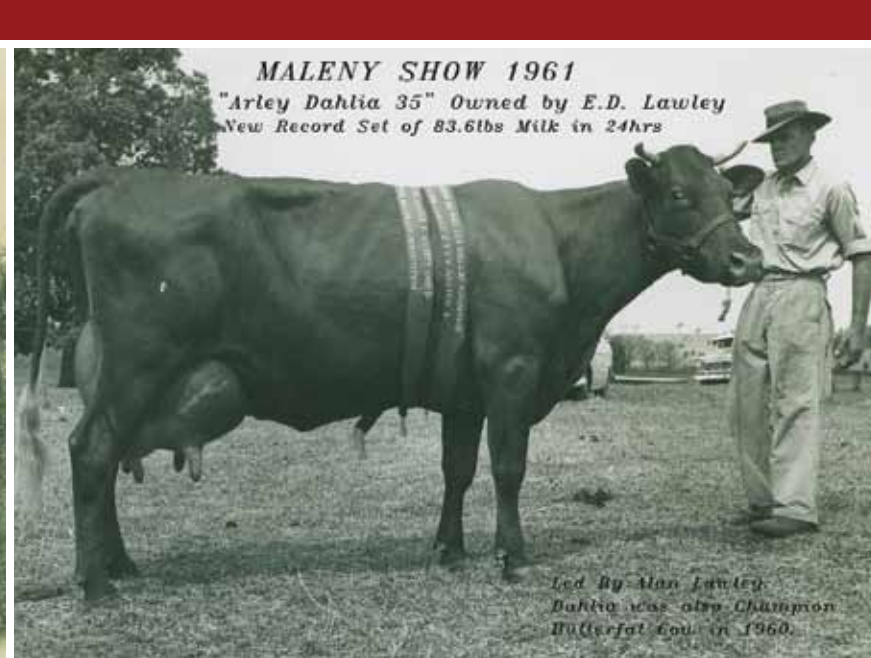
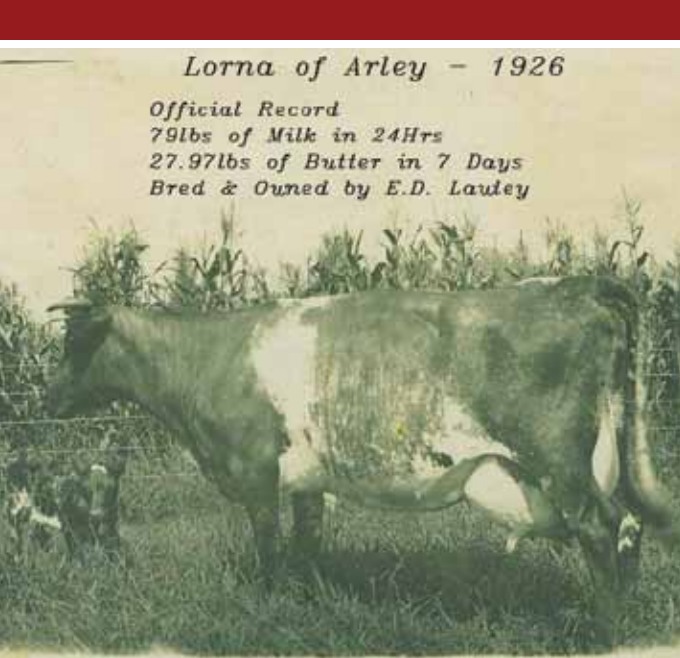
1927
The show grows in stature and is described in one article as competing for the premier country dairy cattle show of Queensland.
1933
The show is abandoned due to the low price of butter and the Great Depression.
1934
No show due to lack of enthusiasm
1940-48

Show is abandoned due to World War II.
1949
First show since war began.
1950
Drought forces the cancellation of the show.
1951
Show extended to three days along with rodeo and campdraft.
1965
Cancelled due to drought.

1988
Show renamed as Caloundra City Show due to council amalgamation.
2008
Due to council amalgamation the name is reverted back to the Maleny Agricultural Show.
2020
Show is cancelled due to Covid-19 pandemic.
2021
Show returns after pandemic.



LEFT TO RIGHT: Ruth Webster Show Princess 1971 | Cheryl, Lois & Melissa 1987 | 2010 | Alan Owens, Jock Johnston, Jaimee Sweeting. Dairy section 2021| Champion Jumping Bree | Nambour High School students | Bill and Ivan Hankinson 2021 | Show Girls at the 2011 show .



YOU COULD GET IN A PICKLE AT THE SIDESHOW

As recalled by Peg Burnett

IN 1922 a meeting was called to discuss the advisability of forming a Show Society, a society called the Agricultural Industrial Pastoral and Recreational Society (rather a grand name – commonly called the A.O.P&R. Society). Mr Charlie Bryce was elected president and Mr Gilbert Sutton Secretary.

The early shows were chiefly Horse and Cattle shows with exhibits in the Pavilion. We all competed in the Best Boy of Best Girl rider under 6 years up to about 14 years.

I was talking to Isobel (Bryce) about the wonderful Welsh ponies her family had.

They won everything in their class.

Competition was very keen in the pavilion where district exhibits were staged in each corner. Wootha, Witta, North Maleny and Reesville were the main contenders and women spent many hours with their preserves, jams and cakes as well as knitting and sewing.

Feelings ran very high over which pickles or preservatives were best and some cross words followed.

Probably the best part of the show for us kids was the side shows. The same ones came each year; Madame Cora, the fortune teller; Jimmy Shardon's boxing troupe offering to

fight local lads, 5 pounds if he could last so many rounds; the Fat Lady, putting on shows for the men only, a kind of stripper who would get down to the black tights and for another two bob would take the black tights off only to reveal the pink ones underneath.

The "less conservative" would take great delight in seeing the "more conservative" taken down.

We had merry-go rounds and chair-o-planes but none of the rides which are so popular today.

With the side shows about every three years would come the gypsies.

They would go up and down the streets in the afternoon and want to "bless the money". They went into the shops where most people had open tills on the counter. They wanted two shillings to bless the place and would quietly slip an extra two bob out of the till.

Then about midnight there would be a great commotion from the fowl yards and the next morning the chooks would be gone.

Towards the end of the 20s it was decided we needed a grandstand, so the "civic fathers" contributed 40 pounds

each and they became life members.

I heard one chap say "the grandstand was use to neither man nor beast", so it was pulled down the liquor Booth built instead. No doubt that had much more use.

Poor Jo McCarthy always celebrated the show and one year lost his tooth in the creek behind the booth. About five years later he drowned in the creek after falling over going up the hill and rolling into the water.

Of course the show was a big event fashion-wise. The ladies all needed new outfits for the show and very grand they were too. It was the year that Hinkler flew to Australia. The governor was coming to open the show.

So the president's wife went off to Brisbane to buy her outfit. She bought this cute little toque type har with ear flaps – a Hinkler hat.

Meanwhile Bess Beard who bought for the local drapery went buying too – and came back with 12 Hinkler Hats, so there were 13 of the same hats at the show.

What we wear at the show today is not so important but the Akubra hat, checked shirt and elastic side boots have become almost a uniform.

LORNA: A CHAMPION OF CHAMPIONS

THERE ARE champions. And then there's Lorna of Arley. The story starts when Ernest Edward Downes Lawley married Minnie Almira Catherine Clark in 1917. They moved to the 84 acres of scrub land at Reesville which they called "Arley" (named after the village which the Lawley's originally came from in Shropshire, England). They cleared the scrub, built their home, dairy and farm buildings, and planted pasture and turned it into prime dairy farm land. Their children were Evelyn, Alan and Val. Evelyn was born at home before Maleny had a hospital.

In 1922, Ernie had high hopes for his favourite cow which he had bred (Lorna of Arley) so he decided to walk her all the way to Landsborough railway siding, loaded with a couple of weeks provisions for them both. They had two train changes to Brisbane RNA Exhibition grounds, and Lorna won the prestigious prize of Champion Butterfat Cow of Queensland 1922, with such incredible production figures - she produced 59kg of milk and 3.5kg of butter in 48 hours - considering the ordeal she had gone through to get there. The milking record stood unbroken for over 40 years. That was his first "Lorna" and her bloodline is still being shown at agricultural shows around Australia today. Amongst a collection of champion ribbons and trophy's he gathered over a forty year period is a Blue ribbon reading "Maleny 1922 Show", preserved and on display at Maleny Show 2022 along with other 1922 RNA memorabilia.

Ernie and Alex Bryce along with another unknown put in 10 pound each to kickstart the Maleny Agricultural show in 1922. His son, Alan, and then grandson Edward followed in his footsteps to carry on the family tradition with pride.

DAIRY CAPITAL

It was the backbone of the show for decades for a good reason: We were the best in the land.



ABOVE: Alan Heading, Sid Cooke, Ray Cox



SHOW TIME

From knitting to boxing, Maleny's sideshow has had something for everybody



TOP LEFT TO RIGHT: 1936 grand parade | FJ Fleiter Whole of farm display | Laurie Wild organizing a Junior Jump Class Maleny Show 1971 | Noel Howes, Laurie Wild on Jewel (centre) in Flag races | Early days wood chops | A Miss Showgirl entrant | An early side show with chair ride | A reunion of Maleny showgirls across the years | Celebrity Milking with Bill Hankinson 2002.



BOTTOM LEFT TO RIGHT: Beacom's Ayrshire Cow | John Hodgens and the chamion butterfat cow at a show in the 1960s | Mathie show cattle Maleny 1952 | Greg & Ed Lawley 1986.

BOTTOM LEFT TO RIGHT: The cake competition | A sky divers view of the showgrounds | Floral arrangement comp | Woodchopping in 2009 | Dog jumps on a clear day | Sally and Ross Hopper.



LEFT TO RIGHT: Betty and George Diefenbach | Bill Hankinson, Frank Rough, Ken McPhee, Allan Heading | Ivan Hankinson, Enid Cox | Evan Evans | Early Maleny show c1925.



MALENY SHOW SOCIETY

YEAR	PRESIDENT	SECRETARY	TREASURER
1922	Alex M. Hunt	G. Sutton	C.H. Denning
1923-24	Alex M. Hunt	C.H. Denning	G. Sutton
1925-28	A.J. Bryce	R. Mackie	G. Sutton
1929	A.J. Bryce	R. Mackie	-----
1930	A.J. Bryce	R. Mackie	-----
1931-33	A.J. Bryce	R. Mackie	R.J. Lindsay
1934	A.J. Bryce / P. Daley	R. Mackie	R.J. Lindsay
1935	P. Daley	R. Mackie	R.J. Lindsay
1936	A.J. Bryce	R. Mackie	R.J. Lindsay
1937	W.A. Collard	R. Mackie	R.J. Lindsay
1938	W.A. Collard	R. Mackie	R.J. Lindsay / W. Read
1939	W.A. Collard	R. Mackie / V. Guthrie	W. Read
1940-43	W.A. Collard	A.G. Cash	W. Read
1944	W.A. Collard	A.G. Cash	Unknown/war years
1945-48	W.A. Collard	A.G. Cash	W.T. Sigley
1949	W.T. Sigley	E.J. Cranney	R. Mackie
1950	W.T. Sigley / W.J. Burnett	Bentley & Shrapnel	R. Mackie
1951	W.J. Burnett	Bentley & Shrapnel	F. Larkin Esq.
1952-53	W.J. Burnett	Bentley & Shrapnel	R.F. Outridge
1954-57	W.J. Burnett	Bentley & Shrapnel	H.J. Hughes
1958	A.S. Finter	Bentley & Shrapnel	H.J. Hughes
1959	W.J. Burnett / E.G. Evans	Bentley & Shrapnel	A. Bergann
1960	E.G. Evans	Bentley & Shrapnel	A. Bergann
1961	E.G. Evans	Bentley & Shrapnel	R. Collard
1962-63	A. Bergann	Bentley & Shrapnel	D.J. Hankinson

YEAR	PRESIDENT	SECRETARY	TREASURER
1964-66	A. Bergann	K.C. & P.E. Neale	D.J. Hankinson
1967	E.J. Cranney	C.H. Mitchell	P. Lyons
1968	E.J. Cranney	C.H. Mitchell	K. Boden
1969	E.J. Cranney	Mrs D. Ekert	K. Boden
1970	E.J. Cranney	Mrs A. R. Dutton	J. Unsworth
1971-74	A. Bergann	Mrs D. Ekert	Mrs B. Walker
1975	W. E. Johnston	Mrs D. Ekert	Mrs B. Walker
1976	W. E. Johnston / E.G. Evans	Mrs D. Ekert	Mrs B. Walker
1977	E. G. Evans	Mrs D. Ekert	Mrs B. Walker
1978-80	A. Bergann	Mrs D. Ekert	Mrs B. Walker
1981-84	W.E. Johnston	Mrs D. Ekert	Mrs B. Walker
1985	P. Parnell	Mrs M. Deans	Mrs B. Walker
1986	P. Parnell	Mrs M. Deans	Mrs J. King
1987-92	W.E. Johnston	Mrs M. Deans	Mrs J. King
1993-94	I.F. Hankinson	Mrs J. Hall	Mrs J. King
1995	I.F. Hankinson	V. Carbery	Mrs J. King
1996-97	I.F. Hankinson	Miss S. Skinner	R. Hawkins
1998-02	I.F. Hankinson	Mrs J. Brooks	R. Hawkins
2002-04	I.F. Hankinson	Mrs J. Brooks	C. Brooker
2005	I.F. Hankinson	Mrs L. Burgess	C. Brooker
2006-09	I.F. Hankinson	Mrs L. Burgess	R. Hawkins
2010-14	I.F. Hankinson	Mrs L. White	R. Hawkins
2015-20	I.F. Hankinson	Mrs L. White	Mrs K Lusk
2020-21	W.E. Johnston	Mrs L. White	Mrs K Lusk

HONORARY LIFE MEMBERS

Sir W. Burnett (Dec)	Mrs E. Cox (Dec)	Mrs K. Hankinson	Mrs S. Larney	Mr I. Aldred	Mrs M. Skerman	Mrs B. Diefenbach
Mrs D. Ekert (Dec)	Mr I. Hankinson	Mrs H. Penney	Mr L. Larney (Dec)	Mr W. Hankinson	Mr F. Skerman	
Mr W. Johnston	Mr R. Hawkins	Mrs M. Wild	Mrs F. Woods	Mr T. Carbery	Mr G. Diefenbach	

