

# CAMPBELL HENRY GREEN

(19 May 1936 to 3 October 1999)

Birth Place: Woodford, Qld, Australia

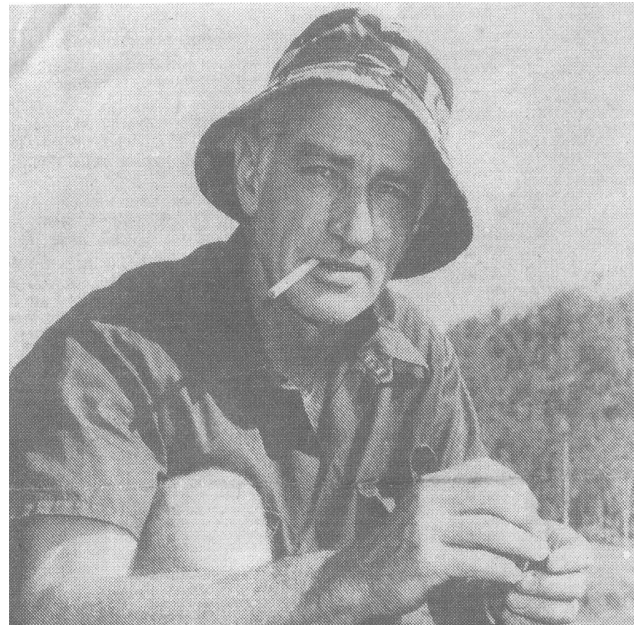
Parents: John Henry Green  
Pauline May Green (nee Campbell)

Siblings: Bruce, Peter & Lois

Married: 2 November 1957  
to Jacqueline (Jacky) Quirk

Children: Jeffery, Ronald, Joann,  
Deborah & Diann

Laid to Rest: Witta Cemetery, Maleny, Qld, Australia



**Campbell Henry Green** was born at Woodford Hospital Queensland on 19 May 1936, third son to John Henry Green & Pauline May Green (nee Campbell). He was raised on the second generation family dairy farm “Greendale” at Mears Lane Booroobin (in the Parish of Conondale). This property was selected by his grandfather, George Robert Campbell in 1906 and still remains in the family to date. Greendale lies on the range at the Mary River water head overlooking the SSE end of the Conondale Valley.

As a child Campbell was schooled at Booroobin Primary School where he rode some 5 miles (8 km) on horseback to attend. He was placed in a boarding hostel at Nambour to complete his junior education at Nambour High School, where he was referred to as a robust football player. During his childhood amongst attending to farm chores, he had a sideline business selling the skins of Carpet Pythons. In one month he earned more than the family dairy farm. The largest python he culled reached a length of 18 feet (5.5m); another carried a total of 36 eggs. At age 12 years he drove the family Bren gun carrier down the main street of Maleny on route to its new owner’s property. In his mid teens he competed in boxing tournaments winning the West Moreton Championship trophy.

Campbell’s early employment years were spent working for PMG (now known as Telstra) and Grant’s Sawmill in Brisbane. He also was employed by a builder where he was trained in maintenance, repairs and the construction of houses, whilst attending TAFE college night courses in carpentry. Also during this time he courted Jacqueline (Jacky) Quirk and they married on 2 November 1957 at Chermside, Brisbane. Then in 1958 he sat his final exam and obtained his Carpenters Licence.

Maroochydore then became the temporary home for Campbell and Jacky, where he contracted to the Eggmolese family and Lindsay Brothers, in the clearing of land for the use of banana plantations on Buderim. Relocating back to his home town Maleny, he then started a contract logging business with the purchase of a truck, timber cutting equipment and the hiring of a bulldozer from Bill Nicklin. He then went on to purchase this bulldozer which he also used in the construction and maintenance of roads in the district, which are still in use today. These roads being the Gap Road linking Booroobin with Bellthorpe, which was officially opened in the early 1960’s and part of the Postmans Track linking Stanley River Road Booroobin with Ahern Road Conondale.

1962 saw Campbell logging the mountain behind Grigor’s farm at Conondale, these logs supplied Olsen’s Sawmill at Eudlo. This required employing a timber cutter and the need to camp onsite in the back of the work Jeep, where he was accompanied by his wife and two young sons. On occasions when needed, he would independently use a crosscut saw by tying a rubber tyre tube to the opposite end and then by anchoring it to another tree, this would create a recoil action. The last of Maleny rainforest was logged by Campbell, this timber was used mainly for making furniture and peeled for ply. He was renowned for his logging skills and bulldozer operation in steep and rugged terrain.

In 1966 Campbell purchased the Conondale sawmill from Thurecht's which then came to be named Conondale Timbers. It has since been heritage listed and is to date still in the family. As a young teenage boy, he and his eldest brother Bruce rode by horseback from Greendale down to view this sawmill, at that stage owned by Manuel Hornibrook's company, Hamilton Sawmills. It was originally built in the early 1930's to supply timber piles, girders and bridge decking in the construction of the Hornibrook Bridge between Redcliffe and Sandgate. When this bridge was built it was the longest in the southern hemisphere and second longest in the world.

With his involvement in the timber industry came the controversy over the conservation of the Conondale Ranges. With his extensive knowledge of the bush environment and rainforest trees, he believed that the selective logging process along with the regeneration/replanting program of logged areas, enforced by the Forestry Department promised for a more sustainable future for rainforests than if left untouched. This then led onto him becoming a spokesperson for the Timber Industry as well as an active member of Association Protection of Rural Australia (APRA). He looked upon himself as being a true conservationist and proof of this is shown with a remaining stand of rainforest located on Greendale.

Greendale was purchased by Campbell from his parents in the early 1970's, which he proceeded to build into one of the most productive dairy farms in the area. The property also supplied the Council with ridge gravel from its quarry for road maintenance within the Boorobin and Bellthorpe area. He also hosted an open field day to the public as an informative source in sharing effective farm management techniques, which he had implemented to achieve better sustainability and production for the property.

Mid 1970's brought the purchase of a prime mover and the contract for carting wheat from Western Queensland and Western New South Wales, as well as the transporting of general freight from Brisbane to Darwin for its rebuild after Cyclone Tracy. With the growth in production from Conondale Timbers came the purchase of a timber yard on Aerodrome Road Maroochydore, as well as 3 other blocks of land on the coast at various stages. Then in 1979 he received the contract for the clearing of land around Lake McDonald (6 Mile Dam) Cooroy so to raise the water level.

In the community came his involvement in the digging and levelling of the Conondale Pool site and the construction of a motocross track at the Conondale Recreational Reserve, now known as Green Park, of which he was a lifetime Trustee. (This track was known as the best in Australia). The biking events at Green Park became a very lucrative source for the Conondale P&C Association which brought combined community involvement. He was also a proactive member of the Sunshine Coast Motorcycle Club. As a Father he always assured his children participated in local sporting events and activities and with every available spare moment, he dedicated it to supporting this and the community. He supplied sawdust for the long jump pit at the Conondale School, he constructed high jump sticks for his children to practice at home, he transported children to sporting/school events and he also involved and supported other children in the community. On occasions when Harpers Creek was in flood, he would use his logging truck to taxi school children across safely. This truck was also used as a float to represent Conondale in the Maleny Centenary procession. All the above took countless hours of donated time, work, foresight and dedication, all of which he gave freely.

Campbell was an attentive, practical but stern father and husband, a dedicated worker to not only his business and family but his community too. His practical approach and outlook coupled with his dry and witty sense of humour, made for a well liked character. He was an icon, not only a great timber man but a great historian and story teller too. At the age of 63 years he passed away from emphysema. **Campbell Henry Green** established a well deserved, respected and honourable reputation in the Conondale and surrounding districts which will live on in history.